



VISIT NAMUR

OFFICE DU TOURISME

TOURIST
GUIDE
EN 2024



NAMUR
CAPITALE

www.visitnamur.eu





GUY DELFORGE
PARFUMS

A visit to the *Atelier de la Parfumerie Delforge* is a chance to discover the world of perfumes in general, and ours in particular; to learn about the different stages of research, composition and creation of unique scents; to walk through the Workshop and its underground passages and immerse yourself in the proud past of its exceptional building in the heart of the Citadel of Namur; and finally, to avail yourself of sound advice in order to find the perfume that matches who you are...



VISITS TO THE WORKSHOP (+/- 1 hour)

Guided or audio-guided tours in French, Dutch, German, English, Spanish and Italian.

- individually, on Saturdays (except public holidays) at 3:30 pm, during the school holidays, from Monday to Saturday (except public holidays), at 3:30 pm.
€3.50 per person (€3.00 for children under 12).

- degressive rates for groups: custom quote and by reservation.

THE SHOP open access year round
Monday to Saturday, 10:00 am to 6:00 pm
(5:30 from November to February inclusive)
Sundays and public holidays, 2:00 to 6:00
(5:30 from November to February inclusive)



ATELIER DE PARFUMERIE GUY DELFORGE

ROUTE MERVEILLEUSE, 60
B-5000 NAMUR-CITADELLE

© Valérie Troen



WALLONIA'S CAPITAL INVITES YOU TO EXPLORE, stroll, relax or set off on adventures! Its generosity, gastronomy and rich heritage are sure to captivate you.

Namur offers the charm and tranquillity of a city nestled at the confluence of the Sambre and the Meuse, protected by its citadel and surrounded by magnificent lush greenery. Namur, proud of its rich history, is also a city looking to the future thanks to NID (Smart and Sustainable Namur), Le Pavillon exhibition centre and also its new territorial identity: "Namur: Confluence of Futures".

Hikers, cyclists, amateur sailors, athletes or simply all who love nature and the open air – Namur invites you to roam its countless paths, forests and riverbanks at your leisure... On foot, by bicycle, boat or even perched on a stand-up paddle, discover lots of original views of the city!

Namur is the place to be for all adventures and dreams.

Anne Barzin, Alderwoman of Tourism Development
Anne-Marie Cisternino-Salembier, Chairwoman of the Tourist Office



SUMMARY

06

Namur's unmissable sights

Some suggestions to start your visit?

08

The Citadel of Namur

2000 years of history in the heart of Europe...



18

A confluence in the heart of the city

It's rare enough to merit emphasis!



24

Wonderful discoveries in all directions

Guided tours - Our attractions - Our museums



40

Stop the clock and enjoy

Not to be missed - Our good addresses



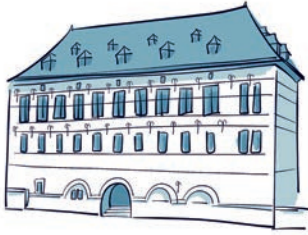
48

Sleep and dream away

Night-time reveals other ambiances...



WELCOME



The Tourist Information Office, located since July 2023 in the **"Halle al'Chair"**, a fully renovated listed historical building dating from the 16th century, is open 7 days a week.

In this magnificent setting that harmoniously combines tradition and modernity, find all the tourist information you need for your escapade in Namur to go smoothly.

Our multilingual tourism advisors are available to help you and answer all your questions, to help you take full advantage of their expertise on our region. In our shop, you will find a selection of local produce so that you can take a bit of Namur back home with you.



© Amélie Ledoupe



© Amélie Ledoupe

OFFICE DU TOURISME DE NAMUR 
Halle al'Chair - Rue du Pont 21
Tel. : +32 81 24 64 49
www.visitnamur.eu • info@visitnamur.eu

From April to September:
Open 7 days a week from 9.30 to 6 PM.

From October to March:
From Monday to Saturday, from 9.30 to 6 PM and on Sundays and public holidays from 11.00 to 3 PM.

Closed on 25th December and 1st January.



© M. Vogliet

NAMUR'S UNMISSABLE SIGHTS

Some suggestions to start your visit? Look no further! You'll find our favourites here – miss them at your peril! Want to know more? Read on, but you'll always get a warm welcome at the Tourist Office!



© Denis Cluson



© Olivier Bourgi



* **Laying siege to the Citadel (p.8)**

One of Europe's biggest fortifications. 2000 years of history and future to be explored at the Visitor's Centre .

* **The cable car (p.14)**

Travel up and down to/from the Citadel or the city centre in less than 7 minutes.

* **Our confluence (p.18)**

The intersection of the magnificent valleys of the Sambre and the Meuse.

* **The Old Quarters (p.25)**

Seeking a cosy, charming ambience? Stroll in the heart of the old quarters... and down little pedestrian lanes that lead onto beautiful squares.

* **Our museums (p.36)**

- **Félicien Rops**, the museum of the 19th century's scandalous artistic genius.
- The delicious **Strawberry Museum in Wépion**.

* **Namourettes (p.26)**

Little retro-style whaleboats



Standing firm on a particularly impressive rocky spur, this outstanding heritage site has retained traces of every period of its 2000 years of history. The residence of the Counts of Namur in the Middle Ages, transformed into a resort by King Leopold II, today it is a

hotspot for events, guided tours and leafy walks that offer spectacular views of the city.



TOURS

UNDERGROUND TOUR

Guided tour with special effects!

While inspecting the Citadel, Napoleon is said to have called it the "termite mound of Europe" due to its extensive network of underground passages. Explore 500 restored metres of them via an immersive guided tour, which will plunge you into the heart of the Citadel in sound and light.

THE TERRA NOVA VISITOR CENTRE

No fewer than 2000 years of urban and military history presented through the history of Namur and its citadel, courtesy of dynamic, educational staging: photos, scale models, videos and much more.

TOURIST TRAIN AROUND THE SITE

This train ride with commentary will let you enjoy the magnificent panoramic views of Namur and the Meuse valley all the more.



Good to know

The temperature in the underground passages is around 13°C
250 steps

© M. Voglet



© V. Poppe

© PIXEL & COMPANY

PRICE

* GUIDED TOUR

- Underground: € 12
- Train: € 6

* OPEN ACCESS TO THE VISITOR'S CENTRE

€ 6

* CITADEL PASS

€ 18 (all activities)

ROUTE

(p. 64-65 - C4)

* ON FOOT

Climb the steps and follow the arrows to Terra Nova.

Access from rue Notre Dame (take note, for good walkers).

* BY CAR / COACH

via Avenue Jean 1^{er}.

Parking on the Esplanade.

* BY CABLE-CAR

See p. 14

INFOS

Citadelle de Namur - Terra Nova

Route Merveilleuse, 64 - 5000 Namur

<https://citadelle.namur.be> info@citadelle.namur.be Tel. : +32 81 24 73 70





ALSO EXPLORE

- ➔ **ATELIER DE PARFUMERIE DELFORGE** (See p. 2)
 Route Merveilleuse, 60 - 5000 Namur
 Tel. : + 32 81 22 12 19
info@delforge.com - www.delforge.com

Nestled among the Citadel's 16th-century galleries, this parfum workshop – unique to Northern Europe – unveils all its secrets and reveals the stages of making a perfume.

Exhibition and sales: open access all year
 - Perfumery tour: € 3.50 - Saturday (except public holidays) and from Monday to Saturday at 3:30 p.m. during school holidays (except public holidays).

- ➔ **THE REINE FABIOLA AMUSEMENT PARK**
 Rond-point Michel Thonar, 1
 5000 Namur
 Tel. : + 32 81 73 84 13
parf@ville.namur.be - www.parf.be

At the top of the Citadel, in a protected green setting, the Reine Fabiola Amusement Park offers several entertainment possibilities for children and families (playground, mini-golf, go-karts with pedals, inflatable castles, trampolines, cafeteria with terrace etc.)

Opening times: from 30 March to 3 November.
 From 11 am to 6 pm
 Prices: € 3 // Children - 1 metre tall: free.



© EXPLORÉVISE_AGENCEVOILA



© B. L'Almonie - ON



MADE IN NAMUR

TERRA NOVA

Route Merveilleuse, 64 - 5000 Namur

Tel. : + 32 81 24 73 70

Come and discover Namur flavours at Made in Namur! Here you will find fresh products, produced locally and available for consumption on site or to take away.



© V. Poppe





Hop aboard the cable car and easily reach the Citadel of Namur from the city centre! Take advantage of the ride to take in the scenery during your journey and then set off to explore the siege on this exceptional site.

INDIVIDUAL RATES

TRIPS	ONE WAY	ROUND TRIP
Adults (16-64 years)	€ 5	€ 7,5
Seniors (65+)	€ 4	€ 6
Children (6+), youths and students	€ 4	€ 5,5
Children 4 and 5 years old	€ 3,5	€ 5
PMR	€ 3,5	€ 5
Children (0-3 years old)	Free	
Annual tourist subscription	€ 45	

TOURIST OPENING TIMES 2024 *

(*) Closed: on Monday from 1st October to 31st March; on 25th December; on 1st January.
Open to tourists on Wallonia-Brussels Federation school days: 9.30 – 6.00 pm.
For more information about our opening times:

www.telepheriquedenamur.be

OPENING TIMES	From 24/02 to 05/07 and from 26/08 to 03/11	From 06/07 to 25/08	From 02/01 to 23/02 and from 04/11 to 31/12
MONDAY (*)	10 am - 6 pm	10 am - 6.30 pm	10 am - 5 pm
TUESDAY	10 am - 6 pm	10 am - 6.30 pm	10 am - 5 pm
WEDNESDAY	10 am - 6 pm	10 am - 6.30 pm	10 am - 5 pm
THURSDAY	10 am - 6 pm	10 am - 6.30 pm	10 am - 5 pm
FRIDAY	10 am - 6 pm	10 am - 6.30 pm	10 am - 5 pm
SATURDAY	10 am - 6 pm	10 am - 6.30 pm	10 am - 5 pm
SUNDAY	10 am - 6 pm	10 am - 6.30 pm	10 am - 5 pm



le pavillon

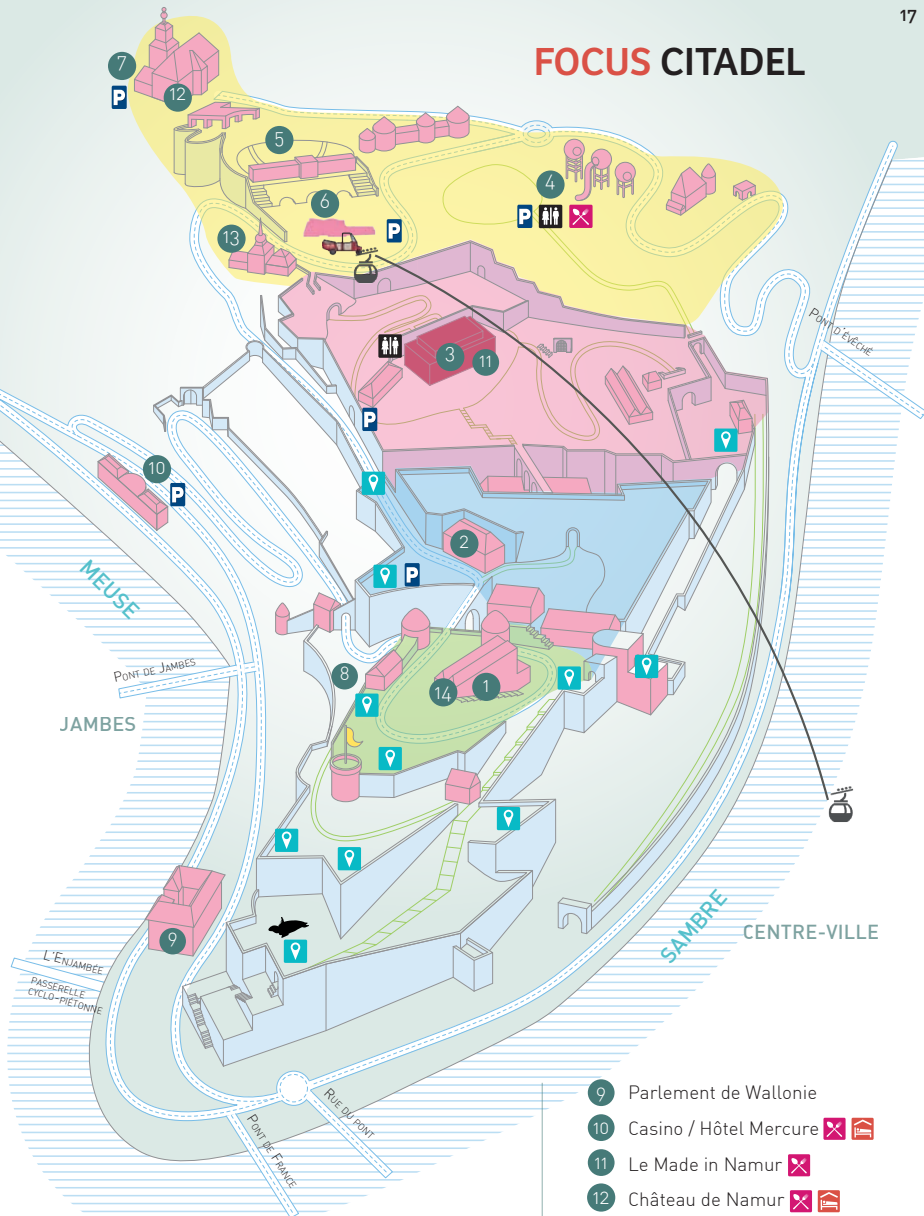
Located in Namur on the Esplanade de la Citadelle, the former Belgian pavilion from the World Fair in Milan is now a new venue of reference in Wallonia for digital culture.

Orchestrated by the KIKK, Le Pavillon plays host to a programme of temporary exhibitions, conferences, performances and workshops, at a crossroads between art, science and technology.















Above all, it is a place for meeting and discoveries, open to all. The full programme can be consulted on www.le-pavillon.be



FOCUS CITADEL



- 1 Château des Comtes
- 2 Atelier de parfumerie G. Delforge
- 3 Terra Nova - tourist welcome centre
Underground Visitor centre
- 4 Parc Attractif Reine Fabiola
- 5 Théâtre de Verdure
- 6 Esplanade - Pavillon - Stade des jeux
- 7 Jardin des senteurs
- 8 Jardin des 2 Tours

- 9 Parlement de Wallonie
- 10 Casino / Hôtel Mercure  
- 11 Le Made in Namur 
- 12 Château de Namur  
- 13 Le Panorama 
- 14 Le Fief de Namur 
-  Point de vue
-  WC
-  Parking
-  Tortue Searching for Utopia
-  Cable car
-  Pavillon
-  Tuk-Tuk

A CONFLUENCE IN THE MIDDLE OF CITY...



It's rare enough to merit emphasis!
The Sambre and the Meuse merge there, offering an unbeatable view beneath the fortress's ramparts. Admire the unobstructed view of the Elysette, the Walloon government, which stands almost opposite the Hospice Saint-Gilles and is home to the Parliament of Wallonia.



© W&P - Olivier Bourgi





Namur is a city of water, huddled at the intersection of the magnificent Meuse and Sambre valleys.

It is also at the water's edge that Namur reveals its charm and way of life. **Set sail on the pretty Namourettes, ride leisurely on the embankments of the Meuse and Sambre by bicycle...** Take a gourmet break in an on-board river restaurant or enjoy a terrace with a view of the Citadel and its confluence...

Let the current carry you along on a cruise and set off to explore Namur's waterways.

Discover the Meuse villas that adorn the riverbanks, the seat of the Parliament of Wallonia situated between the river and the Citadel, the Strawberry Museum, which you can visit, and so much more.... **Cross the Enjambée, the Grognon footbridge to get to Jambes (or back),** or make the most of the view for your selfies! **Wander around the new Confluence Esplanade and question yourself about tomorrow's city at the NID** before taking the Enjambée towards Jambes and the sumptuous Villa Balat.

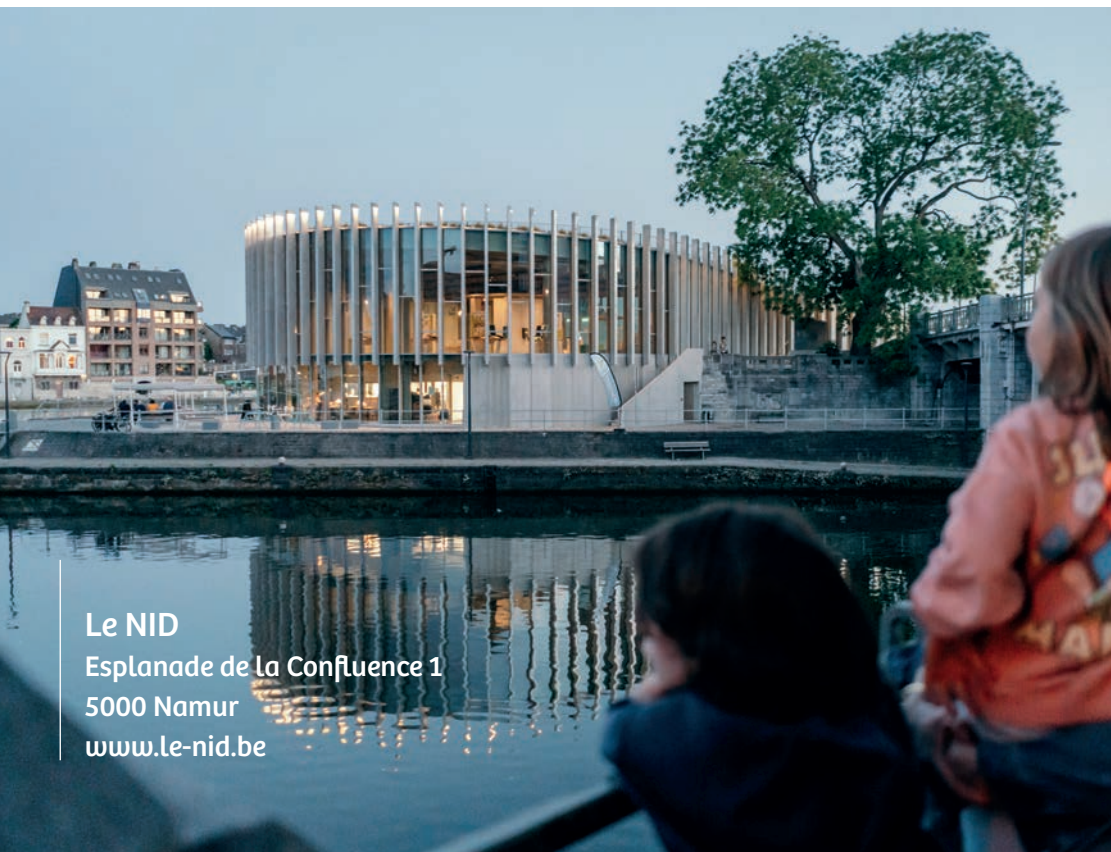
le nid

EXPLORER
CO-CONSTRUIRE
MONTRER



© Roberty Sébastien

© Roberty Sébastien



Le NID
Esplanade de la Confluence 1
5000 Namur
www.le-nid.be

VISIT THE NID

- Wednesday to Friday: 10 am - 5 pm
- Saturday to Sunday: 2 pm - 6 pm
Duration of visit: 1h
- Audience: From age 12 (adult accompaniment required for under 12s)
- Languages: FR – NL – EN – DE
- Accessible to PRMs
- Entry to the exhibition and free activities
- Reservation required for activities
- Reservation on www.le-nid.be
Registration is available on-site or by telephone, subject to availability



© Philippe Piraux



© WBT - Bons Bateurs d'Aurélié

- The NID, « **Intelligent and Sustainable Namur** » is a space that puts citizens at the heart of the debate around the future of Namur and questions the role of cities in the face of current and future challenges (climate change, energy dependence, erosion of biodiversity, conflicts, migration, loss of social connection, impoverishment, etc.)
- Visitors will discover 3 spaces and have access to many awareness-raising tools: video capsules, video-mapping, interactive tables and a virtual reality and 3D space. Beyond its scenography, the NID also offers free entertainment and activities for all audiences that are connected to the themes it broaches.
Want to discover the NID and its activities? Visit www.le-nid.be
- A catering space, **la Brasserie de la Confluence**
At the confluence of the Meuse and the Sambre, Chef Ludovic Vanackere offers innovative, sustainable and local cuisine in a bistro style.
 - 70 seats, open 7 days a week
 - All day: possibility to have a drink
 - Lunch and dinner: Savoury and sweet dishes à la carte
 - Afternoon: only sweet foods
 - Information and reservation : +32 470 44 39 29 // www.la-confluence.be



© la Brasserie de la Confluence



ON BOARD



Le Meuse Ardennes

Tel. : +32 81 24 64 49 +32 82 22 23 15

www.croisieres-namur.be

Les «Croisières Namur» offer you a **50-minutes trip with commentary between the three Namur locks** (exploration of the historical centre of Namur, the confluence and the Citadel seen from the river...) or a **01:45 cruise linking Namur with Wépion**.

Embarkation: Quai des Chasseurs Ardennais. Pont de Jambes (near the Casino Resort) See page 58.

L'OYMPIA

Tel. : +32 475 49 38 90

<https://www.namur-croisieres.com/>

Les Namourettes

These little retro-style whaleboats convey you from one bank to the next of the Sambre and the Meuse. They run every day in July and August, as well as at weekends in June and September.

Embarkation:

Tel. : +32 81 24 64 49

www.visitnamur.eu

See p. 64-65.





Les Capitaineries de Namur

A relaxing leisure space offering a convivial change of scene!

Bar, snacks.

Hire of stand-up paddle, without license 7-person boats, kayaks.

Organisation of private events.

Port de Jambes

Boulevard de Meuse - 5100 Jambes

Open from 15 April to 15 October

From 10 a.m.

Tel. : + 32 498 11 21 24

www.lescapitaineries-de-namur.be

lescapitaineriesdenamur@gmail.com



© Serge Chanter



© Les Capitaineries



The Flow

Stand up paddle, Pedalos, Blob Jump, Beach-volley, pétanque, water sports, climbing wall and tree-top adventure course (for the under-14s), sand beach, snack bar. From May to September.

Tel. : +32 496 28 28 00

Boulevard de la Meuse 160

(Parking rue Pierre du Diable)

www.facebook.com/theflowbycharliesclub/



WONDERFUL DISCOVERIES IN ALL DIRECTIONS...

In Namur, anything goes to convey you from one discovery to the next. Depending on your mood, with or without a guide, set off on your adventures on foot, by bicycle, by boat or even on a stand-up paddle...



© WBT - Olivier Bourgi



© M. Vogliet



© M. Vogliet



GUIDED TOUR OF THE HISTORIC CENTRE

Our guide takes you to the heart of the city and its history, sharing the ambience with the particular charm of the small streets of the old districts...

- Visit in French. English, Dutch and German on prior request only
- Departure from the Tourist Office at 2.30 pm
- Every Saturday and public holiday in May, June and September
- Every Wednesday, Saturday, and public holiday in July and August
- Prices: € 6,50 per person - € 3,50 for students - free for under 12s
- Reservation required at the Tourist Office on +32 81 24 64 49 or www.visitnamur.eu

le Tuk-Tuk de Namur

A tour on a Tuk-Tuk

2 guided tours from the cable car 'Citadelle' station.

- ➡ **'The Citadel Revealed'**
35 minutes, 8 km - € 18 per circuit (max. 3 adults and one child on a lap).

Discover the Citadel in the blink of an eye!

- ➡ **'Marvellous Wépion Strawberries'**,
60 minutes, 18 km - € 32 per circuit (max. 3 adults and one child on a lap).

Your driver will take you to the strawberry museum in Wépion taking you along the marvellous route along the banks of the Meuse. Admission and guided tour of the museum included as well as a small tasting session.

- Visits possible between 10.15 and 5.30 pm
- **July - August:** runs from Wednesday to Sunday – it is advised, but not compulsory, to book in advance.
- **September - June:** booking compulsory the day before, at the latest.
- Customised circuit or special routes are possible on request: prices start at € 30.
- Please note: there is only one tuk-tuk available.

➡ <http://namurinc.be/visite/tuk-tuk/>



THEMED TOURS

On foot, by bicycle, historical or gourmet
(in French)

In partnership with the "Guides Touristiques du Namurois", the Namur Tourist Office invites you to (re)discover the city and its surroundings around an original theme.

All information in our brochure "Themed Guided Tours" or at www.visitnamur.eu

THEMED GARDENS

Namur, a city at the heart of nature!

Explore our 5 gardens on various themes!

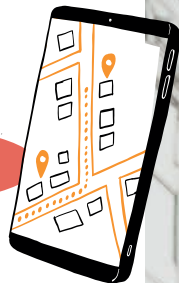
- **The Garden of Scents**
Rue de l'Ermitage, 1 - 5000 Namur
- **The Garden of the Two Towers**
Route Merveilleuse - 5000 Namur
- **The Garden of the Little Fruits**
Chaussée de Dinant, 1092 - 5100 Wépion
- **The Jean Chalon Garden - Symbols**
*Boulevard Frère Orban
Parc Louise-Marie - 5000 Namur*
- **The Garden of Poets**
Rue Fumal, 28 - 5000 Namur

To find out the gardens' opening times:

www.visitnamur.eu



OUR APPS



JOOKS

The Tourist Office of Namur, in collaboration with the Sports and Culture Services of the City of Namur, has developed tourist running trails (discovery of the city while running), allowing you to discover the tourist and cultural attractions of Namur to the rhythm of your stride!

Download the Jooks app for free, activate the GPS-based geo-location system and choose the trail that suits you. Enable audio commentary to be guided as you wish.

More information: www.jooks.app



Discover the charm of Namur via the Totemus app, hunting for treasures. Completely free. Enjoy an original and unforgettable experience! 7 hunts.

To download the app and for more information: www.totemus.be

Coddy

The Urban Escape Game is a trail game with puzzles to solve and missions to perform. It is no longer from a room you have to escape but from the city!

To download the app and for more information: www.coddygames.com



AT YOUR PACE...

* Discovery circuit

The Tourist Office offers you a circuit that is open to all.

Walk : architectural riches and the most beautiful places in the city centre.

On sale at the Tourist Office: €1

This itinerary is also available free of charge as an audioguide via the smartphone app **izi.TRAVEL**.

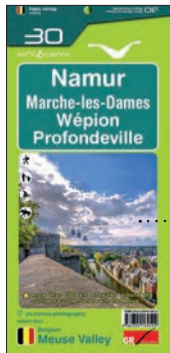
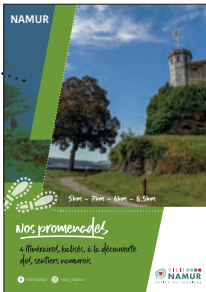
* IGN map

The **Namur Tourist Office** has marked out more than **200 km** of walking trails! Short or long itineraries, all tastes are catered for! Trails from **5 to 30km**. Departures: Naninne, Wépion, Malonne, Namur, Loyers, Vedrin and more.

www.visitnamur.eu

* Our walks

Looking for some inspiration for a wonderful stroll? **Head straight to our new "Our Walks"** brochure. There you will find **4 signposted itineraries**, which will take you on an exploration of Namur's paths and villages.



* Numbered nodes

Discover the province of Namur by bike with the numbered-node network.

Make up your own customised route by choosing starting and finishing points and taking in points of interest of your choice.

Find out more at

www.velo.province.namur.be

* E-bike hire

For a wonderful ride on the banks of the Meuse without getting too tired out, an e-bike is a good idea for a day (or two)!

8 speeds, Bosch motor, equipped with padlocks and saddlebags.

Bookings :

Auberge de Jeunesse de Namur

Avenue Félicien Rops, 8 - 5000 Namur

Tel. : +32 81 22 36 88

www.lesaubergesdejeunesse.be/namur

* RAVeL

Namur is situated at the intersection of RAVeL itineraries 1 and 2. The first of these cycle paths links **Comines with Visé** while following the valleys of the Sambre and the Meuse (more than 400km), while the second provides a route **to Hoegaarden from Mariembourg (169 km)**

The "Namur-Dinant" route is a very special itinerary.

<http://ravel.wallonie.be>

* Mini-Ardenne maps

Never-before-seen maps with a numbered-node network of thousands of kilometres of trails along the most beautiful tacks. On sale from the information centre at the Tourist Office.

* GR guidebooks

Essential guidebooks for your next hikes. On sale from the information centre at the Tourist Office.



Street Art

Stroll where the mood takes you and admire the works of art scattered along the urban route. The city is turning into the pretext for a permanent exhibition...

We invite you to explore this street art trail, which will continue to be added to over the years.

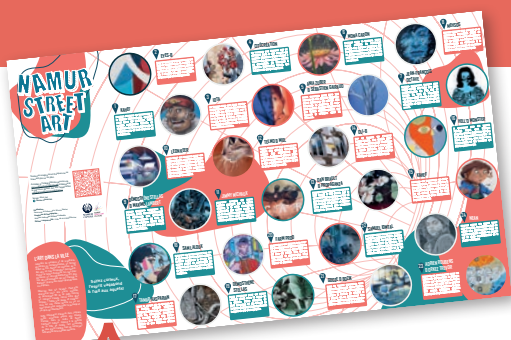
www.namur.streetartcities.com

LOOK UP

Isaac Cordal Sculptures in the city

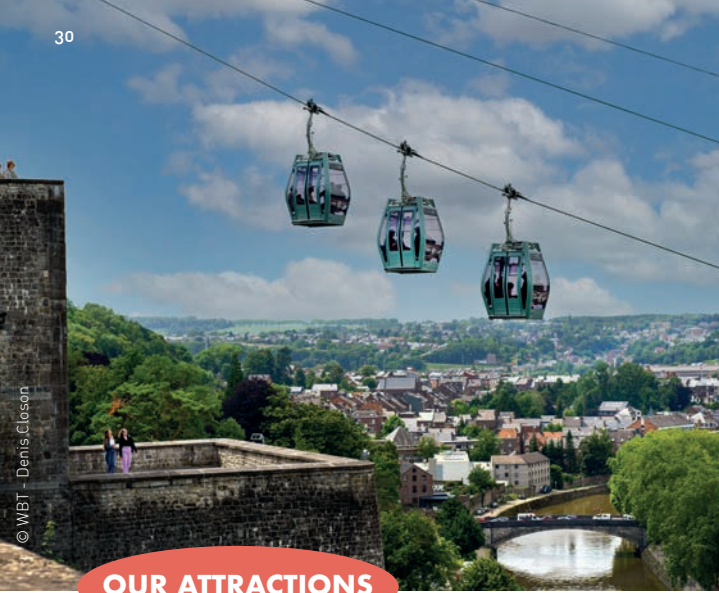
They have already invaded London, Berlin, Paris, Barcelona, Milan, Malmö and, more recently, Brussels. The miniature sculptures by Spanish artist Isaac Cordal tickle the curiosity and fire walkers' imaginations on each city trip. 45 miniature sculptures by Spanish artist Isaac Cordal are dispersed in the streets of Namur, starting from the City Hall. Ironically, but poetically too, these human figurines tell a story and provoke questioning. An occasion to reflect on the role and place we occupy in society. Or simply to take a new, curious look at the city and its most fragile inhabitants.

www.namur.streetartcities.com



**New map
available**





OUR ATTRACTIONS

The Citadel

See p. 8

The Cable-car

See p.14

Atelier de Parfumerie Guy Delforge

Citadel of Namur - See p. 2 - 12

Le Delta

See p. 38

The Reine Fabiola amusement park

Citadel of Namur - See p. 12

Tuk-Tuk

See p. 26

E-bike hire

See p.28

Segwaynam

Discover Namur by segway!
Rue Félix Martin 1 - 5020 Flawinne
Tel. : +32 475 66 14 47
www.segwaynam.be



Electric scooters – Kayaks

Péniche Formigny

Quai des Chasseurs Ardennais

+32 497 52 26 12

www.facebook.com/penicheformignygiteluvial

Trot-e-Fun

For groups of minimum 5 people

Discover the region of Namur in a fun and original way aboard an electric scooter.

Meeting place on request.

www.trot-e-fun.com

Vespa Tour

Feel the wind in your hair at the wheel of a Vespa!

Chaussée de Liège 159 - 5000 Namur

Tel. : +32 476 34 60 22

www.vespatour-namur.be

Le Meuse Ardennes

See p. 22 - 58





© PAbbaye Notre-Dame du Vivier

Les Capitaineries de Namur

See p. 23

Namur sans amarres

For 1 to 3 persons, maximum
Private boat ride in a vintage (speedboat).
2 possible formulas.

Boulevard de la Meuse - 5100 Namur
www.facebook.com/NamurSansAmarres

The Flow

See p.23



Casino de Namur

Avenue Baron de Moreau, 1 - 5000 Namur
Tel. : +32 81 22 30 21
www.casinodenamur.be

Notre-Dame Du Vivier Abbey

The Cistercian abbey crossed the centuries to become a building classified as a historical monument entirely restored to its original state. This exceptional site invites you for relaxation and discovery. In summer, its terrace offers small dishes with a unique view of the Abbey garden. A restaurant/bar "La Chapelle Bethleem" where you can indulge in tasty slow-cooked dishes, Abbey bread and cheese... and why not, accompanied by the "Clem de Castro" beer. Tastings, visits, tours; a place to live the most memorable moments.

Find all the news and events on Facebook.

Rue Notre Dame du Vivier, 153
5024 Marche-les-Dames
Tel. : +32 81 24 00 24
www.abbayenotredameduvivier.be



© Gabriel Balaguera



© Vincent Poppe

Brasserie artisanale de Namur

It was in this brewery dating back to 1812 that aficionados brought the tasty beers "La Houpe" and "Jambes en l'air" to life. Rue de la Première Armée Américaine 165 5100 Wepion
Tel. : + 32 475 38 16 64
www.houpe.be

Brasserie du Clocher

Housed in a former repurposed chapel, the Brasserie du Clocher brewery is the fruit of a project by a whole village and two friends passionate about beer. Sales counter open every Saturday morning from 10 a.m. to 12:30. Guided tour every 3rd Sunday at 11:30 a.m. and 4 p.m.: €8. With tasting: €12
Rue du Petit-Babin, 156 - 5020 Malonne
Tel. : +32 471 10 18 28
www.brasserieduclocher.be

Fort de Saint Héribert

Tours, events...
Route des Forts - 5100 Wépion
Tel. : +32 478 40 77 78
www.fortsaintheribert.be

Théâtre Jardin Passion

A cultural venue dedicated to and made complete by several vocations. Rue Marie Henriette, 39 - 5000 Namur
Tel. : +32 472 96 53 16
<https://theatrejardinpassion.be>

Théâtre de Namur

Music concerts, exhibitions and meetings
Place du Théâtre, 2 - 5000 Namur
Tel. : +32 81 22 60 26
www.theatredenamur.be

Grand Manège, Namur Concert Hall

A concert hall that seats 800: world music, classical, jazz.
Rue Rogier, 82 - 5000 Namur
Tel. : +32 81 71 15 00
<https://grandmanege.mystrikingly.com>

La Nef

Concerts, theatre, exhibitions...
Espace culturel d'Harschamp
Rue Saint Nicolas, 2 - 5000 Namur
www.lanef.be

Cinema Caméo

Rue des Carmes 49 - 5000 Namur
Tel. : +32 42 22 27 78
www.grignoux.be/fr/

Cinema Acinapolis

Rue de la Gare Fleurie 16 - 5100 Jambes
Tel. : +32 81 32 04 40
www.pathe.be

Karabox

2 karaoke rooms available for private parties. From 2 to 10 people 2 Quiz / Blind test rooms on a TV studio setting.

For 4 to 18 people.

Chaussée de Dinant, 279 - 5000 Namur

Tel. : +32 487 77 41 11

www.karaboxnamur.be

Enigmaloek

With your team (2 to 5 persons), you have 1 hr. to solve a series of puzzles and find freedom! Only in French.

Rue des Houblonnières, 36 - 5000 Namur

Tel. +32 485 06 30 35

www.enigmaloek.be

Escape Room Namur

Solve the puzzles to exit the room!

Avenue Prince de Liège, 96 - 5100 Jambes

Tel. : +32 487 45 52 51

www.escapenamur.be

Le huis clos - Escapes Games ephemeral

60 min. to solve puzzles on premises of a different kind. Only in French

Tel. : +32 471 10 67 49

lehuisclouescapenamel@gmail.com

<https://lehuisclouescapenamel.wixsite.com/escapenamur>

Aérodrome de Namur

A space dedicated to the passion of aviation.

Rue Capitaine Aviateur Jacquet, 44

5020 Suarlée

Tel. : +32 81 55 93 50

www.aerodromedenamur.be

ParaClub Namur

Parachutists of all levels. Tandem jump, formation, etc.

Rue Capitaine Aviateur Jacquet, 44

5020 Suarlée

Tel. : +32 475 94 79 31

www.paraclubnamur.com

Cap Vol à Voile

Discover the magic of motor-free flight aboard a glider and enjoy the magnificent views.

Rue du Capitaine Aviateur Jacquet, 44

5020 Suarlée

Tel. : 0472 64 65 90

www.planeur.be

Bowling de Namur

16 lanes, play area and laser game.

Pierrades and snacks, etc.

Chée de Perwez, 251 - 5002 Saint-Servais

Tel. : +32 81 73 10 11

www.bowlingnamur.be

Laser Game Evolution

Score as many points as possible in dark mazes over multiple levels.

Rue de la Gare Fleurie 16 - 5100 Jambes

Tel. : +32 81 40 00 81

<https://lasergame-evolution.com/>

Golf de Rougemont

A magnificent "18-hole".

Chemin du Beauvallon, 45

5170 Profondeville

Tel. : +32 81 41 21 31

www.golfderougemont.be

Drakkar Rouge

The 1st themed axe-throwing bar in Belgium.

Rue Patenier, 14 - 5000 Namur

Tel. : +32 81 46 21 04

www.ledrakkarrouge.com

TreM.a

Musée des Arts anciens du Namurois

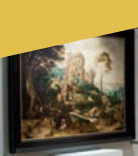
Au cœur
de votre culture



PROVINCE
de NAMUR
TreM.a



© Guy Focant



Situated in an 18th-century mansion, well hidden behind the stucco of its façade listed as part of Wallonia's outstanding heritage, the hôtel de Gaiffier d'Hestroy is home to treasures of the Middle Ages and the Renaissance.

Among the exhibited masterpieces, the oldest of which date back to the 12th century, we find the Treasure of Oignies, one of Belgium's 7 wonders, renowned sculptures by the Maître de Waha and the paintings of Henri Bles, which evoke the Meuse valley.

Open from 10 a.m. to 6 p.m. Closed on Monday

Price: €5 (€8 with exhibition)



© Guy Focant

TreM.a – Musée des Arts anciens
Rue de Fer 24 • 5000 Namur • +32 81 77 67 54
www.museedesartsanciens.be

OUR MUSEUMS



© Service Culture / Ville de Namur



© Service Culture / Ville de Namur



© Service Culture / Ville de Namur

LES BATELIERS

ARCHAEOLOGICAL AND DECORATIVE ARTS MUSEUMS

Rue Saintraint, 3 - 5000 Namur

Tel : +32 81 24 87 20

www.lesbateliers.namur.be

In the heart of Old Namur, a few steps from the Cathedral, Les Bateliers museum centre hosts exhibitions, conferences, concerts, theatrical performances and entertainment throughout the year on an exceptional site combining the former master's house, a chapel from the 19th century and contemporary gallery.

The Decorative Arts Museum, the former mansion of the Counts of Groesbeeck and the marquesses of Croix, with a garden of French inspiration, immerses you in the atmosphere of a prestigious residence of the 18th century. Next to it is the Archaeological Museum (currently in final phase), which nevertheless aims to make visitors rediscover the archaeological collections devoted to the region of Namur through temporary exhibitions.

A veritable cultural island, Les Bateliers connect the Félicien Rops Provincial Museum, the House of Poetry and the House

of the Count through gardens that make up part of the urban art route (poetry chairs of the Quebec sculptor Michel Goulet, mural by Tamar Kasparian, miniature sculptures by the Spanish artist Isaac Cordal).

Opening times: Tuesday to Sunday from 10 am to 6 pm. Closed on Mondays and public holidays. Free entry. Activities for school groups and families.

Guided tour for groups on request.



© Service Culture / Ville de Namur



Establishments with the "Bikes Welcome" label



FÉLICIEN ROPS MUSEUM PROVINCE OF NAMUR

Rue Fumal, 12 - 5000 Namur
Tel. : +32 81 77 67 55
www.museerops.be



Situated in the heart of Old Namur, the museum presents the life and work of Félicien Rops, from his début as a caricaturist to his most inflammatory works.

Price: €5 - With exhibition: €8
Concessions for students and seniors.
Free for under 12s.

Open from 10 a.m. to 6 p.m., from Tuesday to Sunday. Open daily in July and August. Closed on 24, 25 and 31 December and 1 January. Two temporary exhibitions per year.

BROTHER MUTIEN-MARIE MUSEUM

Fond de Malonne, 117 - 5020 Malonne
Tel. : +32 81 44 51 65

The museum presents a poignant homage to this 19th-century man of the church, who devoted his life to prayer and teaching. Photos, personal items, clothes and audiovisual room.

Free
Open all year from 9 a.m. to 6 p.m.



Free on the first Sunday of the month

MUSEUM OF ANCIENT ART FROM THE NAMUR REGION - OIGNIES TREASURE (TREM.A)

Rue de Fer, 24 - 5000 Namur
Tel. : +32 81 77 67 54
www.museedesartsanciens.be



Collections from the Middle Ages and the Renaissance: Oignies Treasure (13th-century gold plate), sculptures, paintings by Henri Bles (16th century).

Price: €5 - With exhibition: €8
Concessions for students and seniors.
Free for under 12s.

Open from 10 a.m. to 6 p.m. Closed on Monday.

STRAWBERRY MUSEUM GARDEN OF SMALL FRUITS

Chaussée de Dinant, 1037 - 5100 Wépion
Tel. : +32 81 46 20 07
www.museedelafraise.com



The strawberry in all its facets: history, culture, commerce and gourmet treats. Farm shop and sampling.

Price: €5
From May to September: from Tuesday to Sunday from 11 a.m. to 6 p.m.
From October to April: from Tuesday to Sunday from 1 p.m. to 5 p.m.



Free on the first Sunday of the month

COMPUTER MUSEUM NAM-IP (NUMERICAL ARTEFACTS MUSEUM- PIONEERING IT)

Rue Henri Bles, 192A - 5000 Namur 
 Tel. : +32 81 34 64 99
www.nam-ip.be

Explore the heritage and history of IT in Belgium, root of the new digital culture.

Price: €8 - €6 (- 12 years, students, seniors)

From Tuesday to Saturday from 10 a.m. to 5 p.m.

COMMANDOS MUSEUM

Rue J. Durieux, 80 - 5020 Flawinne
 Tel. : +32 2 442 10 13 - +32 2 442 10 10
www.museedescommandos.be

This museum traces the history of the Belgian Commandos from 1942, the year they were founded in Great Britain, to the present day. Discover their hardware, equipment, weapons, vehicles and more.

Admission free.

Open every Saturday from 1 p.m. to 6 p.m
 By appointment: +32 496 59 72 62

CATHEDRAL TREASURY AND DIOCESAN MUSEUM

Place du Chapitre, 1 - 5000 Namur
 Accès par la cathédrale Saint Aubain
 Tel. : +32 498 71 03 16
www.musee-diocesain.be

This museum brings together the cathedral's most precious possessions, and reflects more than 900 years of religious and political history.

Admission €3/person

Every Thursday, from April to October, from 2 p.m. to 5 p.m.

SAINTE JULIE'S CENTRE

Rue Julie Billiard 17 - 5000 Namur
 Tel. : +32 81 25 43 07
<http://www.sndden.be/centre-dheritage>

The history of the Sisters of Our Lady of Namur, a teaching congregation that has a presence on all continents, is preserved in this centre. Its founder, Saint Julie Billiard (1751-1816), devoted her life to education by establishing free schools for impoverished young girls.

From Monday to Friday from 9 a.m. to 12 and from 1 p.m. to 4 p.m. Weekends and groups by reservation. Open to all.

SAINT-LOUP CHURCH

Rue du Collège, 17 - 5000 Namur
 Tel. : +32 471 99 58 25
 Tel. : + 32 81 21 48 09
www.eglise-saint-loup.be

Saint-Loup church, situated in the historical heart of Namur, is one of the gems of Baroque art in the Former Southern Netherlands. A listed part of Wallonia's outstanding heritage, its interior will impress visitors with the scale and quality of its décor.

Discover the organs, exceptional instruments in a jewel of architecture.

Saturday: 11 a.m. - 6 p.m. (from April to September)

11 a.m. - 4 p.m. (from October to March)

Wednesday and Sunday: 2 p.m. - 6 p.m. (from mid-July to mid-September)

Guided tour: Saturday 3 p.m. - €3
 Admission free



LE DELTA

Situated at the confluence of the Sambre and the Meuse, at the foot of the Citadel, the Maison de la Culture de Namur cultural centre has recast itself as the **DELTA**. Exhibition rooms, three theatres, recording studios, documentation centre, events and training spaces, panoramic terrace.... The **DELTA** is designed to be a "third place", a lively space of encounters boasting a restaurant, shops and not only that, spaces for just hanging out!

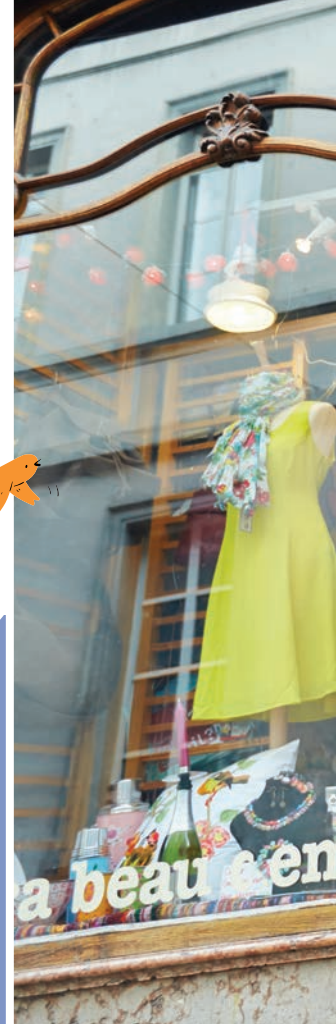
www.ledelta.be





STOP THE CLOCK AND ENJOY...

Ready for a little tour through the cosy pedestrian lanes, dotted with quaint shop windows? Here you will find shops, restaurants or even craftspeople... The art of living well is taken very seriously in the capital of Wallonia.



Wallonia's capital, Namur is also its heart... and Namur's residents have plenty of that! We are happy to prove our generosity by giving you our best addresses, places we love to go and share our legendary art of living well.



© WBT - Denis Ervoaux



© E. Lapeere

Treats not to be missed....

A brief stop at **la Confluence**, some finds at the **Boutique des Créateurs Namurois**, or fine groceries and spirits at the **Caves de Wallonie**, à la carte dining or choices from the menu at **l'Espèglerie**, or tapas at **Limoni**, a hearty dish at the **Fief de Namur**, a glass of good wine at **Vino Vino**, with something to go with it! Not forgetting the excellent double address for delighting the senses and relaxing: the restaurant **La**



Table du Royal Snail and the designer hotel **The Royal Snail** etc... Yes, Namur is the capital of gourmandism and refinement!

More “on the sweet side”?

Taste bright-red, super-sweet **Wépion strawberries**. You will also not be able to resist the sweetness and crunch of “**Bié-trumé**” nutty caramels, with a name inspired by a colourful, mischievous character in Namur folklore. These little marvels can be found at the **Maison des desserts**, Namur’s home of high gourmandism. As an ideal accompaniment to these sweet treats, a good coffee from the **Maison Delahaut** where, several times a day, roasting is done before your eyes, in the shop.

More “on the savoury side”?

Try “**Petit-Gris de Namur**” snails, a strong presence in local gastronomy and also the city’s symbol. Treat yourself to an “**avivance**”, a puff pastry filled with minced meat, served hot or cold.



You will also enjoy refreshing beers in the form of “**Blanche de Namur**” (Brasserie du Bocq), a “**Houppe**” (Brasserie artisanale de Namur) or a “**Philomène**” (Brasserie du Clocher) or one of the Meuse crus (Domaine du Chenoy, Ry d’Argent, Château de Bioul, Château Bon Baron). Not forgetting the traditional “**Péket**” (Dutch gin), which enjoys pride of place during the unmissable “**Fêtes de Wallonie**”.

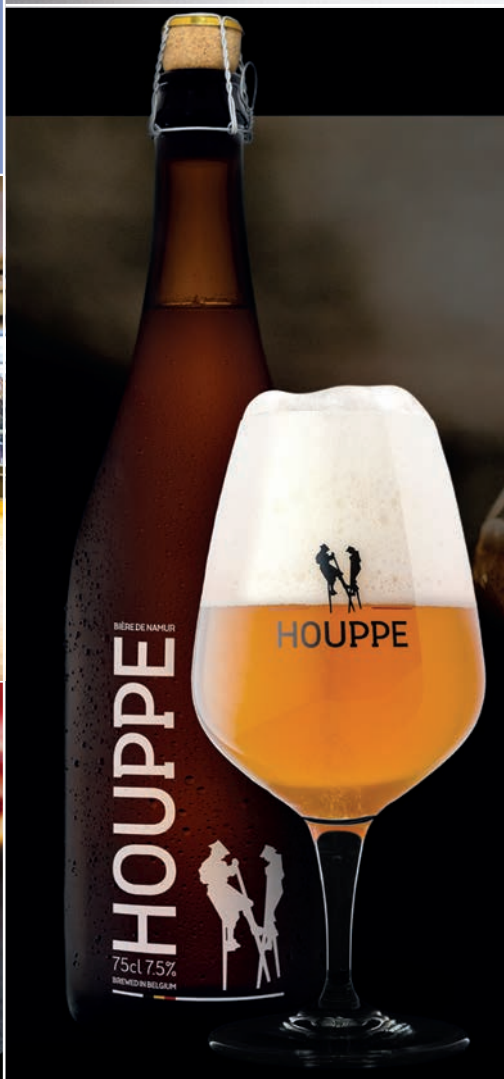
Savoury or sweet, our gourmet treats can be sampled and taken away **Made in Namur** (see p. 13), the self-service for rural products that offers the full range of local and regional products.



© B. D'Almonite - OTN



© WBT - Denis Erroyaux



OUR GOOD ADDRESSES



Looking to enjoy?

You will be overcome by an impression of an open-air shopping gallery in the city centre. In the heart of the old quarters, give in to the temptation of our vintage, classic, trendy or sophisticated boutiques: a warm welcome is in store for you...





L'Essentiel *

Starred gastronomic restaurant
Rue Roger Clément, 32 - 5020 Temploux
+32 81 56 86.16 // www.lessentiel.be

Attalez-vous *

Starred gastronomic restaurant
Tienne Maquet, 16 // + 32 81 20 10 23
www.attalezvous.be

Atelier de Bossimé ®

MICHELIN Green Star: Gastronomy and sustainability
Gastronomic restaurant – Local products
Rue de Bossimé, 2 - 5100 Loyers
+ 32 478 13 71 25 // www.atelierdebossime.be

Les Potes au Feu

Gastro Bistro 2021 Gault+Millau awards
Bistronomie
Avenue de la Plante, 4 // +32 81 64 04 44
www.facebook.com/lespotesaufeu.bistronomie/

La Plage d'Amée

Gastronomic restaurant
Rue des Peupliers, 2 - 5100 Jambes
+32 81 30 93 39
<http://laplagedamee.be>

Petit pays

Gastronomic brasserie - Seasonal cuisine
Rue des brasseurs 35
www.petitpays.be

La Table du Royal Snail

Bistro restaurant in a designer hotel
Avenue de la Plante, 23 // + 32 81 57 00 23
www.theroyalsnail.com

L'Espièglerie & le Grill des Tanneurs

Hotel, gastronomic restaurant and grill
Rue des Tanneries, 13 // +32 81 24 00 24
www.tanneurs.com

La rue de demain

At the Delta – Refined cuisine
Rue des Bouchers, 19 // + 32 81 44 44 49
<https://laruededemain.be>

La Confluence

Brewery - Local, seasonal and sustainable menu
Rue du Grognon, 1 // +32 470 44 39 29
www.la-confluence.be

Le Panorama

Bistro Restaurant
View of the Meuse valley
Route Merveilleuse, 82
+ 32 81 65 58 71
www.panoramanamur.be

Les Terrasses de l'Écluse

Brasserie
Chaussée de Liège, 477 // +32 81 30 33 60
<https://terrasses-ecluse.be>

Brasserie du Quai

Restaurant - Brasserie - Seafood
Rue du Quai, 9 // + 32 81 65 70 03
www.brasseriequai.be

Brasserie François

Traditional cuisine
Place Saint-Aubain, 3 // + 32 81 22 11 23
www.brasseriefrancois.be

Le Fief de Namur

Bar - Restaurant - Distillery
Route Merveilleuse 50 // +32 81 94 67 12
<https://lefiefnamur.be>

Brasserie Le Royal

Traditional cuisine
Place du Théâtre, 2 // +32 81 22 01 33



L'Estaminet du Bistro Belgo Belge

Belgian bistro
Rue Saint-Joseph, 20 // +32 81 81 00 82
www.estaminetbbb.be

Le Temps des Cerises

Rural cuisine
Rue des Brasseurs, 22 // +32 81 22 53 26
www.cerises.be

Cavo

Italian food
Rue des Brasseurs 63 // +32 81 54 82 50
www.cavo.be

Bocata et Cætera

Spanish specialties, bocadillo and tapas.
Delicatessen
Rue du Bailly 14 // + 32 473 71 97 77
<https://bocataetc.be>

Ta mère, la gaufre

Sweet and savoury waffles
Rue des Bouchers, 16

La Maison des Desserts

Pâtisserie and restaurant
Rue Haute Marcelle, 17 // +32 81 22 74 51
www.maison-des-desserts.be

Limoni

Restaurant and tapas bar
Rue de la Croix, 48 // + 32 81 22 85 00

Gadsby Burgers

Specialty burgers
Rue Lelièvre, 4 // + 32 81 26 25 65

Vino Vino

Wine bar
Rue des Brasseurs, 61 // +32 81 26 00 51
www.vinovino.be



Les Cup'inn

Cupcake specialties
Rue Haute Marcelle, 11 // + 32 81 41 10 13
www.lescupinn.com

Coffee & More

Home-made pastries, breakfast, ...
Rue Emile Cuvelier, 21 // +32 81 41 14 16

Botanical by Alfonso

Cocktail bar dedicated to mixology and botany
Rue des Brasseurs, 46
www.alfonseandstuff.com

Barnabeer

Beer bar
Rue de Bruxelles, 39

Arsène Café

Local and cultural bar
Rue des Brasseurs, 19 // +32 81 34 64 73
www.arsenecafe.be

Oenothèque Grafé

Wines, champagnes, fine alcoholic beverages
Place Saint-Aubain 9/13 // +32 81 22 43 15
www.grafe.be

Cafés Delahaut

- Shop
Rue de l'Ange, 21 // +32 81 22 11 58
www.cafesdelahaut.be
- Restaurant
Rue Marie Curie, 1 - 5020 Suarlée
www.restaurantcafesdelahaut.be

Cave de Wallonie-Côté Terroir

Fine groceries
Rue de la Halle, 6 // +32 478 56 57 15
www.edzdiffusion.be/coteterroir.html

Mistinguette

Biscuits, lards, meringues, financiers, fondants, cookies, speculoos...
Rue Saint Jean 2 // +32 492 11 28 68

Beer Craft Market

Belgian and foreign beer boutique
Marché Saint-Remy, 14 // +32 477 53 99 23
<https://www.craftbeermarket.be>



L'Empreinte Belge

Gifts, Belgian specialities and snacks
Rue des Carmes, 69 // +32 474 06 38 95
lempreintebelge.wixsite.com/lempreintebelge

Sapristi

Slow deco shop
Rue des Brasseurs, 13 // + 32 81 22 54 80
www.sapristi.design

Mais qui es-tu ?

Belgian label clothing
Rue de la Croix, 54 // +32 081 40 05 35
www.maisquiestu.be

Boutique des Créateurs Namurois

30 designers from Namur in one boutique
Rue Saint-Jean 3 // +32 455 14 78 86
<https://boutiquedescreateursnamurois.be>

Un petit coin de parapluie

Second-hand vintage
Rue des Carmes, 15 // +32 81 22 55 03
www.unpitticoindeparapluie.com

Il fera beau demain

1001 ideas for giving and receiving pleasure
Rue Saint-Loup, 12 // +32 81 22 81 06
www.ilferabeaudemain.be

Les Badasses

Shopping, relaxation, well-being on the Charles barge.
Rue du Quai // +32 494 33 73 43
www.lesbadasses.com

Ramd'Âm

Purchase and sale of books, comics, CDs, vinyls, DVDs, board games...
Rue des Carmes, 52 // +32 81 65 54 34
www.boutiqueramd.com



Fancy an ice cream?

Our favorites

Tendance Glacée

Rue Marcel Vandy, 43 - 5020 Flawinne
+32 81 74 06 84
www.tendanceglacee.com

Le glacetrnome

Rue Mazy, 73 - 5100 Jambes
+32 493 933 533
www.glacetrnome.be

Fleur de lait

Chaussée de Dinant, 910 - 5100 Wépion
+32 81 46 05 30

Cornet ou petit pot

Rue des Fripiers, 3
+32 470 45 31 52
www.cornetoupetitpot.com

Le Glacier de Namur

Place de l'Ange
+32 81 23 02 90
www.leglacierdenamur.be



SLEEP AND DREAM AWAY...

Night-time reveals other ambiances... The heat of the city centre or enjoying an after-show drink at the water's edge, an evening of strolling through the historical heart...





Hotels

Mercure Namur Hotel & SPA *****

Avenue Baron de Moreau, 1
5000 Namur
+ 32 81 64 92 20
<https://all.accor.com/hotel/B2T4/index.fr.shtml>
hb2t4@accor.com
100 rooms. From €99



The Royal Snail & SPA *****

Av. de la Plante, 23 - 5000 Namur
+ 32 81 57 00 23 | www.theroyalsnail.com
30 rooms. From €98

Ne5t Hôtel & SPA ****

Allée de Menton, 26 - 5000 Namur
+ 32 81 58 88 88 | www.ne5t.com
6 suites. From €220



Château de Namur *****

Av. de l'Ermitage, 1 - 5000 Namur
+ 32 81 72 99 00 | www.chateaudenamur.com
29 rooms. From €150



Les Tanneurs *****

Rue des Tanneries, 13 - 5000 Namur
+ 32 81 24 00 24 | www.tanneurs.com
35 rooms. From €75

**Le 830 ******

Chaussée de Marche, 828
5100 Naninne
+ 32 81 84 08 30
www.hotel830namur.be
info@hotel830namur.be
42 rooms
From €100

BeB Hotel ***

Boulevard Ernest Mélot, 40
5000 Namur
+ 32 81 23 40 10
https://www.hotel-bb.com/fr/hotel/
namur
bb_7505@hotelbb.com
105 rooms. From €75

Grand Hôtel de Flandre ***

Place de la Station, 14 - 5000 Namur
+ 32 81 23 18 68 | www.hotelflandre.be
info@hotelflandre.be
33 rooms + 6 studios
From 75 to €149

**Ibis Namur Centre ******

Rue du 1^{er} Lanciers, 10 - 5000 Namur
+ 32 81 25 75 40
www.accorhotels.com/3151
h3151@accor.com
92 rooms. From €78

Ibis Styles ***

Avenue Ecolys, 2 - 5020 Suarlée
www.ibis.com | HB6A4@accor.com
+ 32 81 74 55 55
99 rooms. From €69

Villa Gracia ***

Chée de Dinant, 1455 - 5100 Wépion
www.villagracia.com
hotel@villagracia.com
+ 32 81 41 43 43
8 rooms. From €130

Bed and breakfast**CitaBel'Air ******

Avenue Bel Air, 6 - 5000 Namur
+ 32 473 59 38 41
citabelair@proximus.be | www.citabelair.com
1 suite. From €155

**Villa Balat ******

Quai de Meuse, 39 - 5100 Jambes
+ 32 473 30 55 00
info@villabalat.be | www.villabalat.be
3 rooms. From €140

Clos du Berger ****

Bois Saint-Antoine, 3a - 5100 Wépion
philippe.bihain@gmail.com |
www.clos-du-berger.be
+ 32 479 77 28 48
1 room. From 60 to €75

Le Manoir Ivoire ****

Chée de Dinant, 642 - 5100 Wépion
info@manoir-ivoire.com | www.manoir-ivoire.com
+32 477 52 75 60
4 rooms. From 115 to €160

Clos de l'Ecluse ****

Boulevard de Meuse, 138 - 5100 Jambes
bb5100@outlook.com
+32 476 88 05 12
1 room. From €85

Domaine de la Noiseraie ****

Avenue d'Ecolys 44-46 - 5020 Suarlée
info@lanoiseraie.be | www.lanoiseraie.be
+32 471 78 99 77
4 rooms. From 155 to €225

**Le Jardin des Secrets ******

Chaussée de Dinant, 131 - 5000 Namur
www.le-jardin-des-secrets.be/fr
info@le-jardin-des-secrets.be
+ 32 471 83 58 22
4 rooms. From 120 to €150

La Bergerie de LIVES 🏠🏠🏠

Rue de Mosanville, 100 - 5101 Namur
 +32 493 86 10 29
 labergeriedelives@gmail.com
 www.bergerielives.be
 1 room. From 125 to €210

Cocoon 🏠🏠🏠

Avenue Vauban, 43
 5000 Namur
 + 32 477 76 63 81
 chambres-hotes-cocoon.be
 https://chambres-hotes-cocoon.be
 admin@chambres-hotes-cocoon.be
 1 room. €120/night

**Avou Nogôtes** 🏠🏠🏠

Avenue Marcel Gourdin, 2 - 5001 Belgrade
 + 32 470 23 40 08
 www.avounozotes.be
 info@avounozotes.be
 From 95 to €430 - 2 rooms

Les Volets Bleus 🏠🏠

Rue Juppin, 22 - 5000 Namur
 + 32 468 42 69 94
 lesvoletsbleus@proximus.be
 1 room. From 95 to €105

Côté Fontaine 🏠🏠

Rue de la Fontaine, 43 - 5022 Cognelée
 info@cotefontaine.be | www.cotefontaine.be
 + 32 81 20 04 75 + 32 478 63 93 88
 2 rooms. From €65
 Reduction if 3 nights or additional persons

La Majolique 🏠🏠

Rue de la Majolique 3 - 5020 Malonne
 + 32 475 53 17 20
 lamajolique@gmail.com
 2 rooms. €120

Les Baloûches 🏠🏠

Tiennes aux Baloûches, 6 - 5002 St-Servais
 + 32 474 79 41 03
 www.lesbalouches.be
 lesbalouches.namur@gmail.com
 1 room. From €57

Gîtes**L'Écureuil** 🏠🏠

Route de la Sablonnière, 22
 5100 Wépion
 + 32 475 53 78 47
 didier.guenegand1961@gmail.com
 4 persons. €120/night

La Petite Ferme Bleue 🏠🏠

Rue du Moinil, 18 - 5101 Loyers
 + 32 479 33 95 77
 brigitte.rolin@gmail.com
 https://namurgite.be/fr/
 12 persons. From 535 to €1300

Gîte du Curnolo 🏠🏠

Rue de Curnolo, 15 - 5020 Malonne
 info@gitecurnolo.com | www.gitecurnolo.com
 + 32 476 75 02 76
 6 persons. From 75 to €470

À la Pointe de l'Île-Rops 🏠🏠

Avenue Félicien Rops, 7 - 5000 Namur
 + 32 476 99 29 22 + 32 496 70 59 92
 https://gitealapointedelile.be
 alapointedelilegites@gmail.com
 6 persons (3 gîtes).
 On request

Gîte du Prieuré 🏠🏠

Rue Regnié Durette, 11 - 5001 Erpent
 yvesetchristine@gite-du-prieure.be
 www.gite-du-prieure.be
 + 32 476 66 63 72
 4 persons. €100. Degressive rate

Le Manoir d'Atys 🏠🏠

Rue du Mologna, 5 - 5101 Erpent
 + 32 475 39 72 47 - + 32 81 31 09 97
 edouard.destreel@freebel.net
 8 persons. From 250 to €650

Le P'ti Canon 🏠🏠

Route des canons, 4b - 5000 Namur
 + 32 494 57 69 79
 valerie.leleux@hotmail.com
 5 persons. €145



Au Fil des Pages [📍]

Rue Léanne, 29 - 5000 Namur
www.aufildespages.be
info@aufildespages.be
 + 32 478 62 58 91
 4 persons. From 90 to €780



Le Relais du Malpas [📍]

Place du Malpas, 9 - 5020 Malonne
www.relaismalpas.be | info@relaismalpas.be
 + 32 477 29 83 50
 9 persons. €780/2 nights



Villa Léanne [📍]

Rue Léanne, 82 - 5000 Namur
 + 32 495 84 40 53
villa@leanne.be | www.leanne.be
 2 persons. €220/2 nights. Degressive rate

La maison « Caracole » [📍]

Rue du Président, 32 - 5000 Namur
info@lesgitesduvieuxnamur.be
www.lesgitesduvieuxnamur.be
 + 32 475 45 76 00
 2 persons per apartment
 Degressive rate: From 85 to €35

Namur - Energite [📍]

Avenue Albert 1^{er}, 95C - 5000 Namur
namurenergite@sdudepervier.be
www.namur-energite.be
 + 32 496 54 40 67
 3 persons. From 60 to €90

Au Maupelin [📍]

Chemin de Maupelin, 8 - 5020 Malonne
www.malonne.com
info@malonne.com
 + 32 477 37 85 06
 4 persons. €100

Gîte du Piroy [📍]

Chemin des Pierres, 32 - 5020 Malonne
www.gitedupiroy.com
gitedupiroy@gmail.com
 + 32 473 51 30 88
 6 persons. From 280 to €400



Le Jardin des Secrets 🏡

Chaussée de Dinant, 131 - 5000 Namur
www.le-jardin-des-secrets.be/fr
 + 32 471 83 58 22
 4 persons. €130/night (min. 2 nights)

Le Savoie 🏡

Rue Catherine de Savoie, 23
 5000 Namur
www.gitenamurcentre.com
 + 32 495 51 10 42
 8 persons. From 128 to €158

La Maison Rops 🏡

Rue du Président, 49
 5000 Namur
www.lesgitesduvieuxnamur.be
ino@lesgitesduvieuxnamur.be
 + 32 475 45 76 00
 2 persons per apartment
 Degressive rate from 75 to €35
 4 persons per apartment
 Degressive rate from 110 to €65

Le Cabri ô Lait 🏡

Chemin des Aides, 3 - 5004 Bouge
 + 32 479 43 29 72
www.lecabriolait.be
gitelecabriolait@gmail.com
 2 persons. From 115 to €440

ARDeD 🏡

Rue Bougmestre Fernand Colon 22
 5020 Malonne
 + 32 497 34 21 39
ardd77@hotmail.com
 6 persons. €100

L'Ermitage 🏡

Rue Bougmestre Fernand Colon, 68
 5020 Malonne
 + 32 476 45 99 64
www.gitelermirage.be
cornetcallens@gmail.com
 9 persons. From 700 to €1350

Le 44 🏡

Rue Chepson, 44 - 5020 Malonne
 + 32 478 34 94 88
caroline@joassin.com
www.gitele44.com
 7 persons. From 135 to €220

Au four et au jardin 🏡

Rue Lieutenant Colonel Maniette, 18
 5020 Temploux
 + 32 478 53 21 51
www.giteaufouretaujardin.be
temploux@giteaufouretaujardin.be
 3 persons. From 140 to €100. Degressive rate

Zanna House 🏡

Rue des Brasseurs, 119 B 11
 5000 Namur
 + 32 497 44 47 04
Zanna.house.namur@gmail.com
 5 persons. €125/night

Bord de Meuse 🏡

Rue du rivage, 10 - 5100 Dave
 + 32 474 54 93 21
www.borddemeuse.be
welcomel@borddemeuse.be
 7 persons. From 385 to €650

O17 🏡

Rue des Azalées, 17 - 5001 Belgrade
 + 32 474 27 79 61
<https://gitenamuro17.wixsite.com/mysite>
maryline.minet@gmail.com
 4 persons. €146



Le Temps de Liresse 🏡

Rue du Château de Saint Marc, 120
 5003 Saint-Marc
 + 32 476 88 89 47
www.letempsdelivresse.com
info@letempsdelivresse.com
 3 persons. From 100 to €150

Les Cardamines 🍷🍷

Comognes de Temploux, 16
5020 Temploux
+ 32 475 27 08 30
lescardamines@hotmail.com
4 persons. From 160 to €290

ô 29 🍷🍷

Fond de Malonne, 29 - 5020 Malonne
www.o29.be
+ 32 485 76 97 19
9 persons. From 800 to €1100

Le Poulailier de Pinpin 🍷🍷

Boulevard de la Meuse, 165 - 5100 Jambes
+ 32 494 59 52 10
alissoir@hotmail.com
4 persons. From 80 to €100

Le Refuge 🍷🍷

Avenue Vauban, 43 - 5000 Namur
+ 32 477 76 63 81
admin@chambres-hotes-cocoon.be
100€/night - 4 persons

Maison Henri 🍷

Rue Henri Lemaitre, 19
5000 Namur
+32 474 38 16 87
marie.flon@gmail.com
2 persons. €112€

Island in Island 🍷

Avenue Reine Astrid, 146
5000 Namur
+ 32 493 54 83 73
emilie@exaktneutral.com
<https://www.islandinland.com/>
2 persons. €169/night

Barges**MS Elisabeth**

Quai des Chasseurs Ardennais
croisieres@mselisabeth.com
www.mselisabeth.be
+ 32 495 43 18 61
5 cabins. From 109 to €149

L'Ange-Gabriel

Quai des Chasseurs Ardennais
info@ange-gabriel.be | www.ange-gabriel.be
+ 32 487 88 56 87
4 cabins. €69

La Valse lente

Quai des Chasseurs Ardennais
lavalselente@gmail.com
www.lavalselente.be
+ 32 479 56 91 16
4 cabins. From 75 to €95

Le Formigny

Quai des Chasseurs Ardennais
+ 32 497 52 26 12
philippe.formigny@gmail.com
www.facebook.com/penicheformignygiteluvial
3 cabins. From 75 to €125

L'Arcadia

Rue du Quai
+32 474 79 81 45
julien.s.paquet@gmail.com
www.peniche-arcadia.com
From 150 to €250

Camping



Les Trieux **

Les Tris, 99 - 5020 Malonne
 camping.les.trieux@skynet.be
 www.campinglestrieux.be
 +32 81 44 55 83 +32 473 81 07 42
 On request

Furnished tourist accommodation

La Huche

Rue Bourgmestre Fernand Colon, 8
 5020 Malonne
 www.gitenamur.be
 +32 477 18 32 22
 4 persons. From 89 to €119

Avenue Rops

Avenue Félicien Rops, 2 - 5000 Namur
 www.avenuerops.be
 info@avenuerops.be
 +32 496 26 53 03

Motorhomes

8 space parking and service terminal (drinking water supply, emptying of household water and WC containers).
 Price: €7.50 per use of the terminal.
 Free parking.
 GPS co-ordinates:
 50° 28.066', 4° 51.004'
 Follow arrows to "Namur Expo"

Youth hostel



Auberge de Jeunesse Félicien Rops

Av. Félicien Rops, 8 - 5000 Namur
 namur@lesaubergesdejeunesse.be
 www.lesaubergesdejeunesse.be
 +32 81 22 36 88
 99 persons. From €25



Establishments with the "Bikes Welcome" label



Establishments with the "Green key" label



Establishments with the "Access-i" label



Vespa Tour

NAMUR



*Discover Namur with
one of a legendary
Vespa !*

*Feeling of freedom
guarantee !*

*Open all year !
Formule from 62,00€ / Vespa*

0476/34.60.22

www.vespatour.be

PIROUETTE

**RECREATION CENTER COVERED
FROM 1 TO 12 YEARS OLD**



*A world of slides, labyrinths
and suspended bridges*

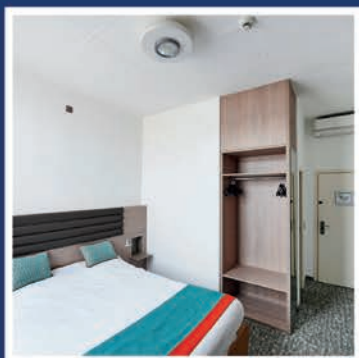
*School holidays: Open
every day from 10.00 am to 7.30 pm.*

*Excluding holidays:
Open Wednesday, Saturday and Sunday*

081/301.301

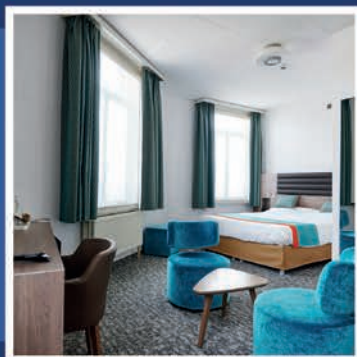
WWW.PIROUETTE.BE

Grand Hotel De Flandre***



- 3 star hotel
- Located in the city centre opposite the Railway Station of Namur
- Situated in a landmark building of more than 100 years old
- 33 large and renovated bedrooms

- Air conditioning
- Soundproof windows
- Coffee and tea making facilities
- Free Wi-Fi
- Flatscreen TV
- En-suite bathroom



- Bar
- 24 hour reception service
- Dry cleaning services
- Varied buffet breakfast
- Car and bicycle hire

For more information or to make a reservation, contact us on:
+32 (0)81 23 18 68 - info@hotelflandre.be

Place De La Station, 14 - 5000 Namur
www.hotelflandre.be

CROISIÈRES NAMUR Marsigny



EMBARKATION

QUAI DES CHASSEURS ARDENNAIS

PONT DE JAMBES

(NEAR CASINO DE NAMUR)



NAMUR - SAMBER & MAAS (50 MIN.), RETURN TRIP NO CRUISES ON WEDNESDAYS

Departure : from the 01/04 to the 30/06 and from
the 01/09 to the 30/09 at 1:30 p.m., 3 p.m., 4 p.m.

From the 01/07 to the 31/08 at 11 a.m., 1.30 p.m.
and 5 p.m.

Price : Adult: € 10 - Child: € 7 and group (+20 pers.) :
€ 8 - School: €6,50

NAMUR - WEPION (1H45), RETURN TRIP NO CRUISES ON WEDNESDAYS

Departure : 3 p.m. from the 01/07 to the 31/08.

Price : Adult: € 15 - Child: € 11- Group (+20
pers.) : € 13,50 - School: € 10

CRUISES POSSIBLE TO ANNEVOIE, YVOIR OR DINANT.

Every Wednesday by booking for groups
(minimum 40 pers.).

Rue Daoust, 64 - 5500 DINANT

Tel : +32 82 22 23 15 ✦ +32 81 24 64 49

www.croisieres-namur.be ✦ christian.marsigny@gmail.com



Located in a small lane, a stone's throw from Namur Theatre and the confluence of the Sambre and Meuse rivers, this magnificent cluster of eleven 17th-century houses is now home to a four-star Hotel and gastronomic restaurant, "L'Espèglerie & le Grill".

With its blue stone frontage, remains of ancient tanneries, brick vaults and stone arches, the site is truly enchanting.

Private car park adjacent to town centre, railway station at 800 metres, Casino at 1.5 km.



hôtel****

espèglerie

grill

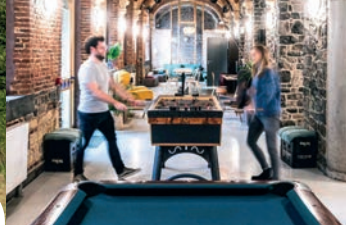
Les Tanneurs de Namur Rue des Tanneries 13b 5000 Namur

Tel : +32(0)81/240024 Fax : +32(0)81/240025

www.tanneurs.com info@tanneurs.com



**Les
Auberges
de Jeunesse**
Belgium



Nature or city, you decide!

Staying at our youth hostel is the best way to travel economically and in an eco-friendly way in a relaxed atmosphere.

Feel like a trip to the vibrant rhythm of the city?
Sleep at the foot of the belfry of Mons, visit the famous museums in Brussels or the Unesco heritage of Tournai, take a walk through the black land of Charleroi or taste the specialties of Liège!

Need a breath of fresh air in the nature?
Have lunch with a view of the Godefroid castle in Bouillon, walk or cycle along the Meuse in Namur let yourself get lost in the sublime Ardennes near Champlon and Malmedy.

Book your stay in one of our 10 hostels and enjoy a unique experience via :

www.lesaubergesdejeunesse.be





Ibis Namur Centre ***

Only 5 minutes away from the city center

92 comfortable rooms

- Sweet Bed by Ibis
- Air conditioning
- Shower and private toilet
- Satellite TV
- Hairdryer

Rooms for 1, 2 or 3 persons

24/7 welcome, bar en snacks

Multilingual and smiling staff at your service

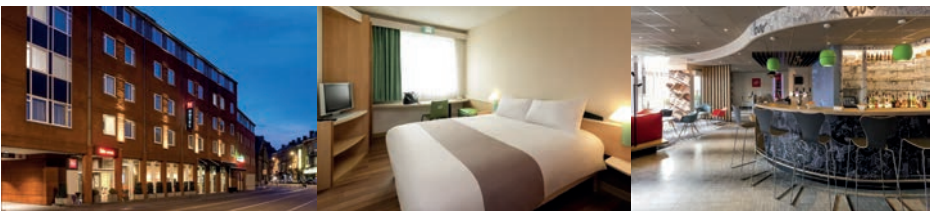
Free Wi-Fi throughout the hotel

Paying private car parking, free bicycle parking

Pets allowed (paying)



rue du 1er Lanciers, 10 - 5000 Namur
 Tél.: +32 (0)81 25 75 40 - Fax : +32 (0)81 25 75 50
 H3151@accor.com
 ibis.com - all.accor.com





Les Bateliers

Rue Joseph Saintraint 3 à 5000 Namur - 081/24 87 20

www.lesbateliers.namur.be

 [lesbateliersnamur](https://www.facebook.com/lesbateliersnamur)

LES BATELIERS

FREE ACCESS

Museum of Decorative Arts: from January to December.

NEW!

Archaeological Museum:

Opening of new exhibition halls in the second half of 2024.

Les Bateliers, located at the heart of Namur, is home to two municipal museums, the Archaeological Museum and the Museum of Decorative Arts with its garden in the French style. Listed as part of the exceptional heritage of Wallonia, the Museum of Decorative Arts is housed in a magnificent private mansion dating from the Age of Enlightenment, the Hôtel de Groesbeeck - de Croix.

The museum, which has a lovely French-style garden, displays a superb collection of decorative art spanning the period from the 17th to the 19th centuries: furniture, timepieces, paintings, sculptures, crystal, earthenware and more. These pieces, created by artists and workshops in Namur, bear witness to the daily lives of the aristocracy in the 18th century.

The Archaeological Museum of Namur has built up a major reputation in Europe due in particular to its collections from late Roman Times and the Merovingian period.

The collections of the Archaeological Museum of Namur are among the richest of the Wallonia-Brussels Federation. The items kept here extend from Prehistoric Times to the early Middle Ages or even the contemporary period as regards the lapidary collections. The pieces come mainly from the Province of Namur and the surrounding area.



NAMUR
CAPITALE



NAMUR
CONFLUENT
CULTURE



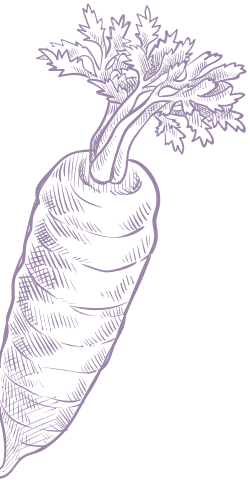
FÉDÉRATION
WALLONIE-BRUXELLES



La Confluence

CUISINE LOCALE ET DURABLE

NON-STOP KITCHEN
OPEN 7 DAYS/WEEK
TEA ROOM
LOCAL PRODUCTS



WHERE TO FIND US?



BOOKINGS
0470 44 39 29





Access



* BY CAR

Motorways E411 (Luxembourg - Bruxelles) and E42 (Liège-Mons), national roads N4 (Arlon-Namur), N90 (Liège-Charleroi) and N92 (Namur-Dinant).

* SMART PARKING

- Park and ride (P+R) is the perfect solution!
 - P+R Saint-Nicolas (276 spaces)
Avenue Albert 1er.
 - P+R Bouge (716 spaces)
Rue Hebar
- Saturday, 4 car parks (350 spaces) at the University of Namur : BUMP, Droit inférieure, Bon Pasteur, Arsenal.

www.namur.be

* BY TRAIN

Place de la Station - 5000 Namur
Tel. : +32 2 528 28 28
www.belgiantrain.be

* BY COACH

Place de la Station - 5000 Namur
Tel. : +32 81 25 35 55 - www.infotec.be

* BY PLANE

- Brussels South Charleroi Airport
www.charleroi-airport.com
- Liège Airport
www.liegeairport.com
- Brussels Airport
www.brusselsairport.be

The Namur Tourist Office cannot be held liable for changes in price, or in other information relating to the attractions and municipalities mentioned in this brochure.

Useful info



OFFICE DU TOURISME

HALLE AL'CHAIR - Rue du Pont 21

Tel. : +32 81 24 64 49

www.visitnamur.eu

Groups Service: +32 81 24 64 44

* MAISON DU TOURISME EXPLORE MEUSE

Tel. : +32 82 22 28 70 (Dinant)

www.exploremeuse.be

* EMERGENCY SERVICES

Emergency medical services : 112

Police : 101 - Place du Théâtre - Namur

Fire : 112

* TAXIS

Hepp Taxis : +32 475 99 99 88

Taxis Namur : +32 81 22 55 55

Taxis Express Namur : +32 476 55 52 44

* PUBLIC TOILETS (FREE)

See p. 64 - 65

* LI BIA VELO

Bike at your disposal at Namur station

www.libiavelo.be

* BLUE BIKE

Bicycles available at Namur station

www.blue-bike.be

* PRO VELO NAMUR

Bicycle hire and repair

Place de la Station, 1 - 5000 Namur

Tel. : +32 81 81 38 48 - www.provelo.org

* ELECTRIC BICYCLES

Auberge de Jeunesse Félicien Rops

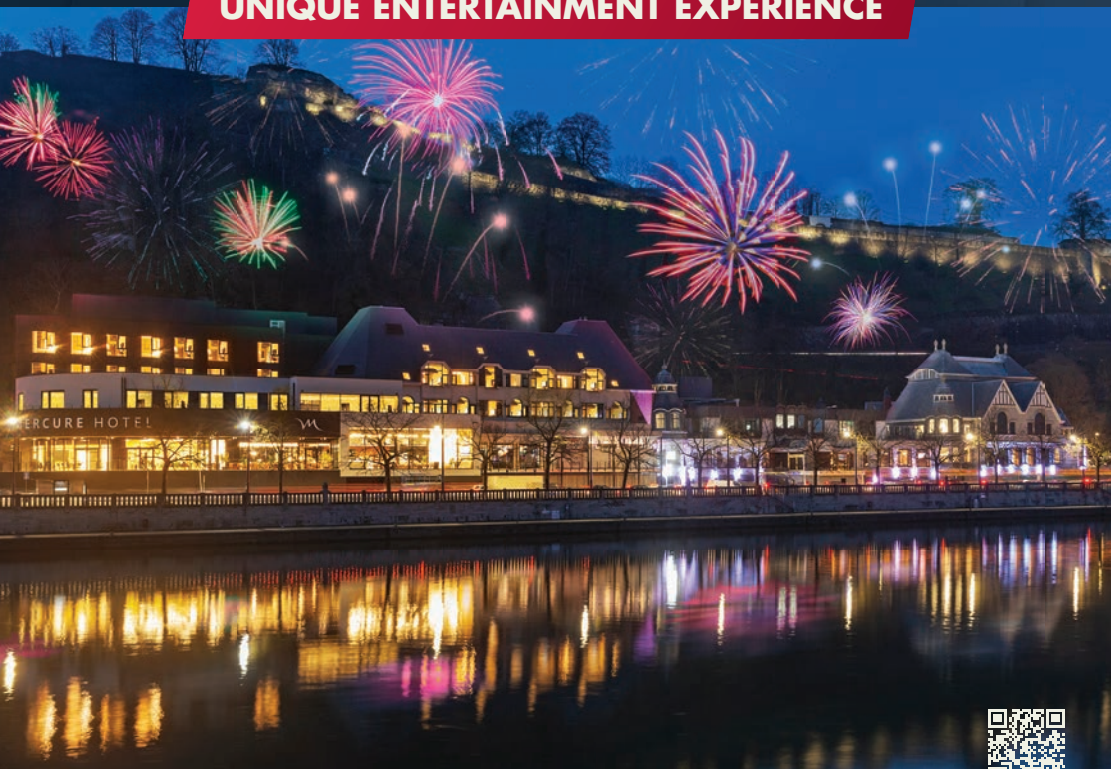
Av. Félicien Rops, 8 - 5000 Namur

www.lesaubergesdejeunesse.be

Tel. : +32 81 22 36 88

Circus CASINO RESORT NAMUR

UNIQUE ENTERTAINMENT EXPERIENCE



Identity card required - Appropriate dress required



Hotel Mercure **** • Seminars & events • Bistronomic restaurant • Wellness



Take to the skies...

Namur Citadel Cable car



Station Centre-Ville
Place Maurice Servais



Station Citadelle
Route Merveilleuse, 61

Free parking

www.telepheriquedenamur.be

+32(0) 81/20 03 60